


*Lauingen
An der
Donau*

Ein Gedicht von **Heinz Piontek**



*Über die Brücke holpert
ein Ochsenfuhrwerk,*

WOHIN?

*Ich weiß nur, dass ich
am Wasser*

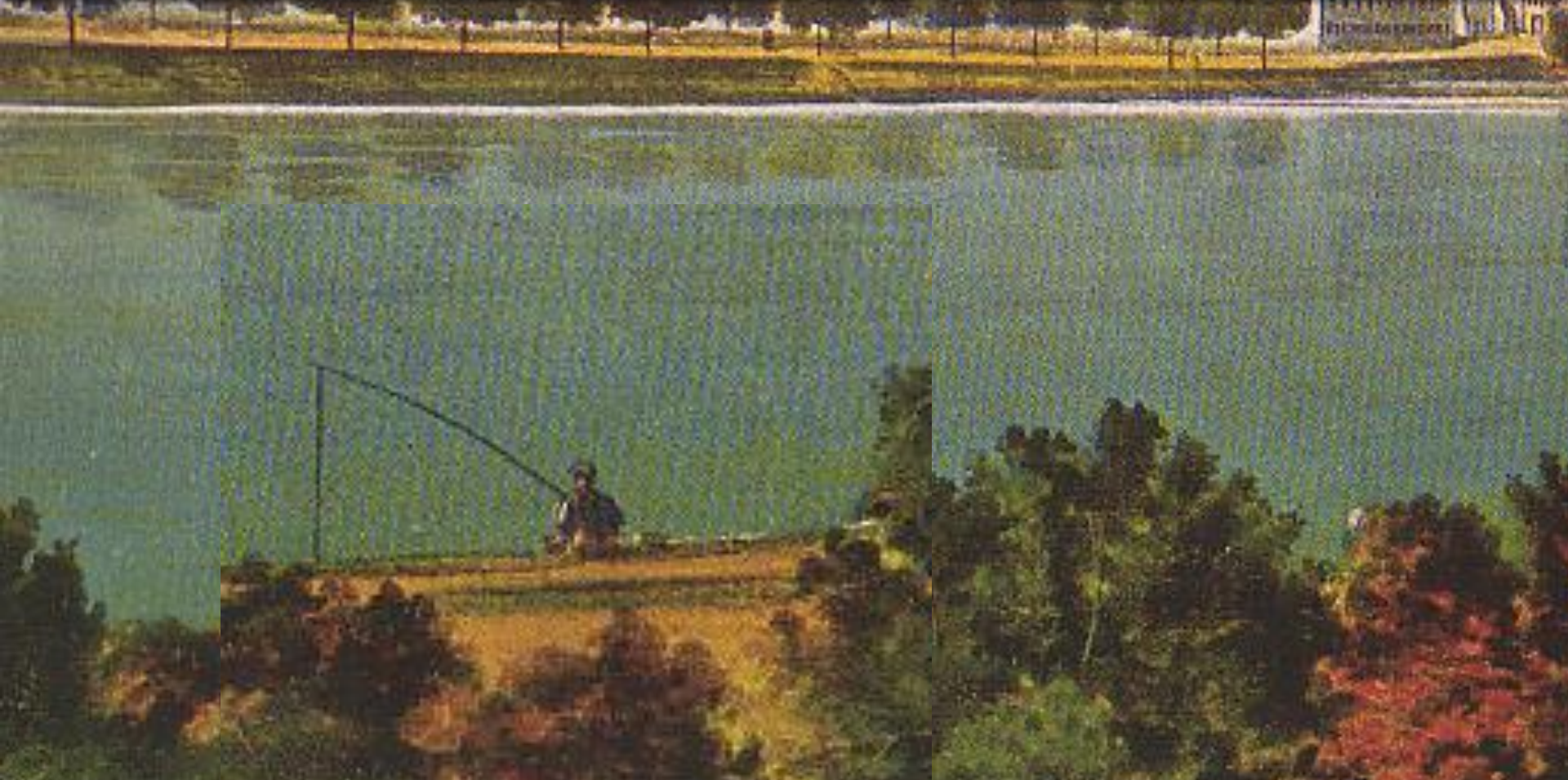


A scenic view of a village with a church and a river. The church has a tall, dark spire. The buildings are made of stone and wood. The river is in the foreground, and the sky is a pale blue. The text "Der Ewigkeit näher bin" is written in a white, cursive font with a blue outline, positioned in the upper middle of the image. The word "Ewigkeit" is written in a larger, white, cursive font with a blue outline, positioned in the lower middle of the image. The word "Ewigkeit" is reflected in the water below it.

Der Ewigkeit näher bin

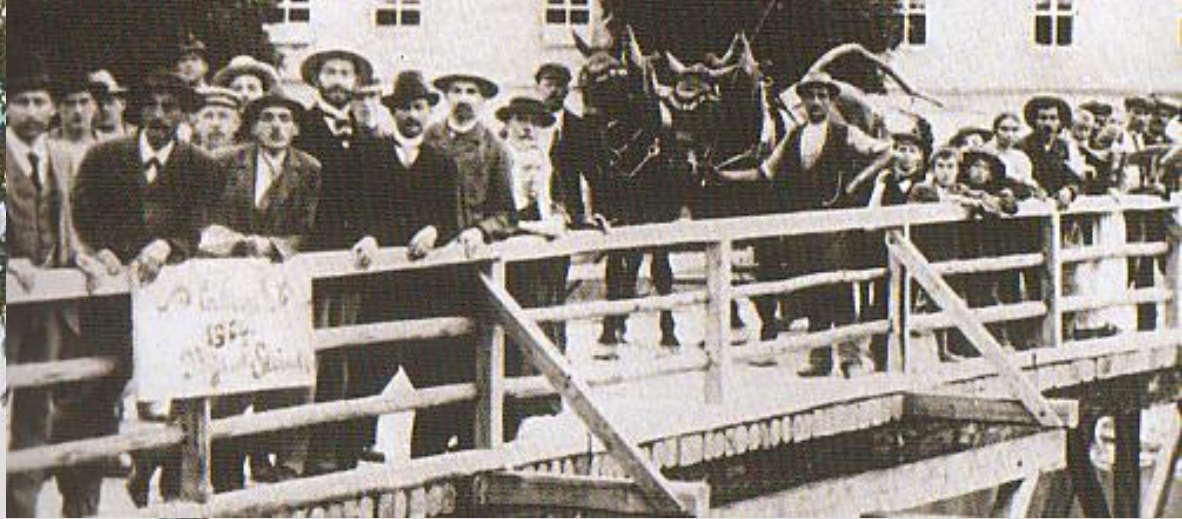
Ewigkeit

DER ANGLER AUF DEN STEINEN

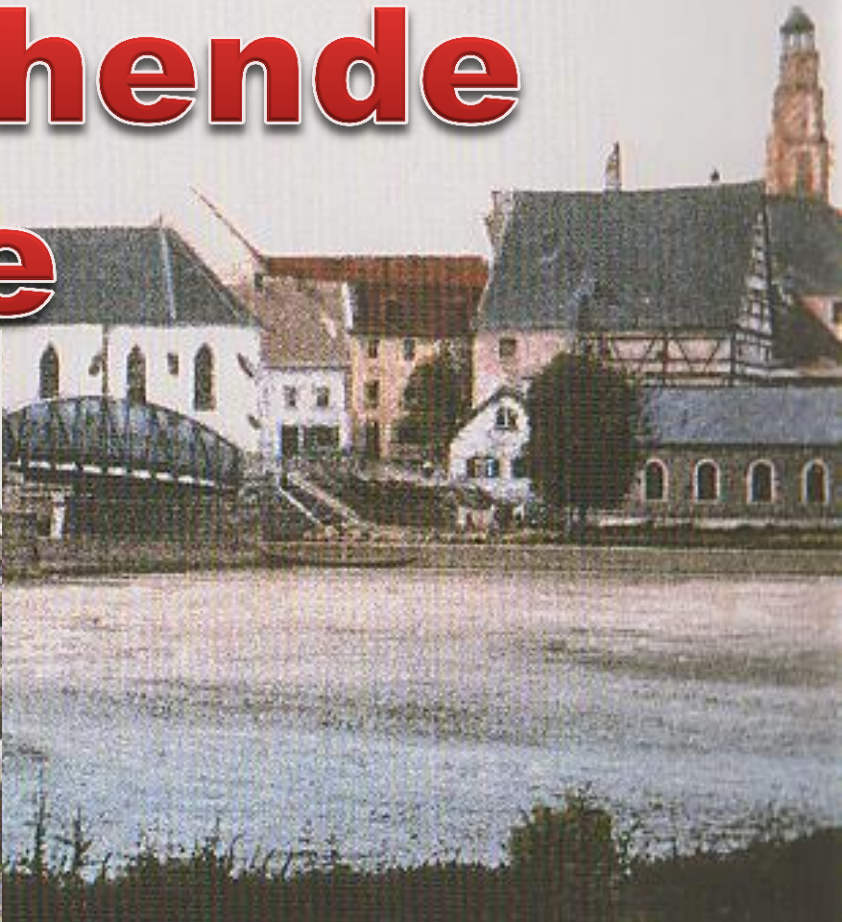


A scenic landscape featuring a body of water in the foreground, rolling hills or mountains in the middle ground, and a sky filled with soft, white clouds. The sun is visible through the clouds, creating a bright, hazy atmosphere. The text is overlaid on the sky in a blue, cursive font.

*Die
himmmlischen
Zeichen
nicht sehen*



Vorüberziehende Herde



*Nun bin ich
mit mir
allein*

Morgen vielleicht schon





Eine Interpretation des Gedichts
„Lauingen an der Donau“
Von Franziska Danner

GRUSS
AUS LAUINGEN